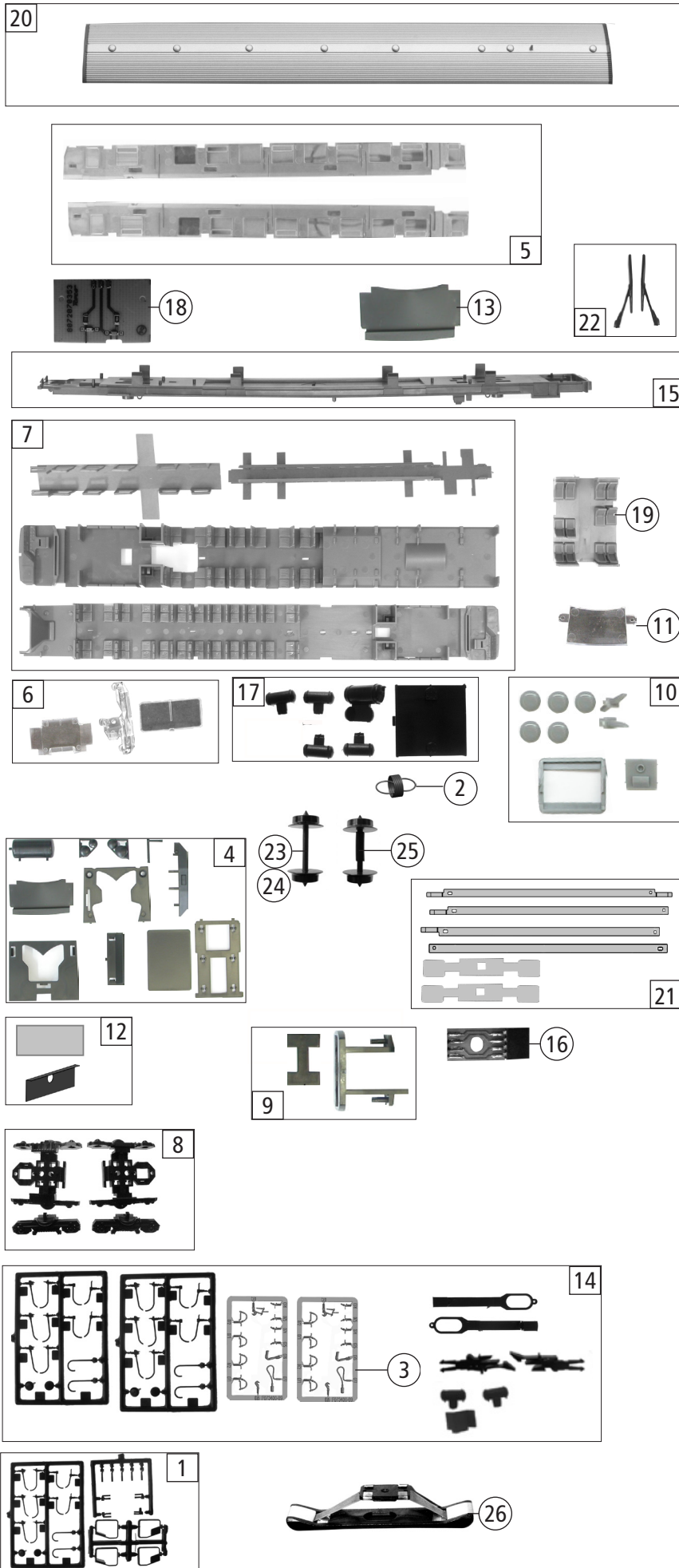


| Pos. Nr. Pos.no. | Beschreibung Description | Art.-Nr. Art.no. | Preisgruppe Price bracket |
|---------------------|--|---------------------|------------------------------|
| 72076 | D - DB BR 628.4 | | |
| 72077 | | | |
| 78077 | | | |
| 1 | Bodenplatte Motorwagen Floor plate | 143795 | 14 |
| 2 | Grundrahmen Basic frame | 141510 | 14 |
| 3 | Gewicht Motorwagen Weight | 143796 | 7 |
| 4 | TS - Kupplung + Deichsel Part set coupling + drawbar | 141512 | 8 |
| 5 | Kupplungsplatine Motorwagen 8pol. Coupling PCB | 141513 | 20 |
| 6 | SK-Schraube M1,6x5 SK-screw M1,6x5 | 115317 | 4 |
| 7 | Kinematikplatte kinematic plate | 141514 | 4 |
| 8 | Kardanwelle Cardan shaft | 87121 | 4 |
| 9 | Motorabdeckung Motor cover plate | 108852 | 4 |
| 10 | Platine oben Motorwagen Upper PCB | 141515 | 23 |
| 11 | Platine unten Motorwagen 1/1-LED's Lower PCB | 141516 | 24 |
| 12 | Brückenstecker - Plux Jumper - Plux | 133241 | 10 |
| 13 | Motor Schwungm+Kardansch.U=18t Motor with flywheel + Cardan reception | 141517 | 24 |
| 14 | Motorkardanschale Motor cardan reception | 87014 | 3 |
| 15 | Getriebeatz 2tlg. Gear set 2-parts | 108863 | 13 |
| 16 | Schneckendeckel Worm gear cover | 95829 | 3 |
| 17 | Schneckensatz m. Kardanschale Set of worm gear incl.cardan reception | 121866 | 13 |
| 18 | Achse 2,6x7,5 mm Axle 2,6x7,5 mm | 89910 | 3 |
| 19 | Achse 2,0x7,5 mm Axle 2,0x7,5 mm | 89911 | 3 |
| 20 | Zahnrad Z=16 rechts Gear wheel Z=16 right | 86435 | 3 |
| 21 | Zahnrad Z=12 M0,4 links Gear wheel Z=12 M0,4 left | 86437 | 3 |
| 22 | Schraube M1,6x5 mm Screw M1,6x5 mm | 114850 | 3 |
| 23 | Radsatz m.2 Haftringen+Zahnrad Wheelset w. 2 trac.tyre + gear wheel | 90470 | 11 |
| 24 | Haftrings.10Stk.8,3 bis 10,2mm Traction tyre set,10 pcs. | 85612 | 10 |
| 25 | Radsatz m. Zahnrad o. Haftring Wheelset w. gear wheel w/o trac.tyre | 90471 | 10 |
| 26 | Lager für Schneckenachse Bearing for worm gear axle | 89749 | 6 |
| 27 | Anlaufscheibe 4x2,1x0,1 Washer | 113942 | 3 |
| 28 | Gehäuse MW. kpl. Betr. Nr. 628 423-5 Chassis complete loco no. 628 423-5 | 143797 | 33 |
| 29 | Radkontaktsatz Set of wheel contacts | 121865 | 12 |
| 30 | Achslager Axle bearing | 121857 | 5 |
| 31 | Radsatz 9mm - geteilte Achse Wheelset 9mm with divided axle | 90975 | 9 |
| 32 | GF-Schraube M2x14 mm GF-Screw M2x14 mm | 117245 | 3 |
| 33 | Dach kpl. Motorwagen Roof complete | 143802 | 17 |
| 34 | Schraube M2x4 mm Screw M2x4 mm | 85670 | 3 |
| 35 | E-Lokführer E-Loco driver | 110407 | 6 |
| 36 | Puffer links - schwarz Buffer left-black | 108866 | 4 |
| 37 | Puffer rechts - schwarz Buffer right-black | 108867 | 4 |
| 38 | Schraube M2x6 mm Screw M2x6 mm | 114828 | 3 |
| 39 | Platine oben Steuerwagen Upper PCB | 141530 | 19 |
| 40 | Klimaleitung Air condition line | 141519 | 6 |
| 41 | Gehäuse SW kpl.Betr. Nr. 928 423-2 Chassis SW complete loco no. 928 423-2 | 143804 | 33 |
| 42 | Schraube M2x4 mm Screw M2x4 mm | 114877 | 3 |

| AC - Wechselstrom | | | |
|-------------------|---|--------|----|
| 43 | Getriebedeckel *AC* Gear cover *AC* | 109187 | 9 |
| 44 | Radsatz m.2Haftr. m. Zahnr. AC Wheelset w. 2 trac.tyre + gear wheel | 90472 | 12 |
| 45 | Haftrings.10Stk.8,8 bis 10,2mm Trac.tyre 10 pieces 8,8 to 10,2mm | 85623 | 10 |
| 46 | Radsatz m. Zahnr. o. Haftr. AC Wheelset w. gear wheel w/o trac.tyre AC | 90473 | 10 |
| Sound | | | |
| 47 | Platine oben MW 12-LED's f.So. Upper PCB MW 12-LED's f.So | 141536 | 20 |
| 48 | Sounddecoder - 22 Plux Sound-decoder with PluX | 129000 | 39 |
| 49 | Lautsprecher RA 15x11 DA 2403 Loudspeaker RA 15x11 DA 2403 | 129524 | 14 |
| 50 | Platine oben SW 13-LED's f.So. Upper PCB SW 13-LED's f.So. | 141537 | 18 |
| 51 | Kontaktstift 27 mm Contact pin 27 mm | 108841 | 4 |



| Pos. Nr. Pos.no. | Beschreibung Description | Art.-Nr. Art.no. | Preisgruppe Price bracket |
|--------------------------|--|---------------------|------------------------------|
| 72076 | D - DB BR 628.4 | = | |
| 72077 | | = | 🔊 |
| 78077 | | ~ | 🔊 |
| 1 | TS - Steckteile Part set of power parts | 108855 | 10 |
| 2 | Zugfeder - RD 2,5x4,3x0,15 mm Draw spring RD 2,5x4,3x0,15 mm | 86242 | 3 |
| 3 | TS - Bremschläuche + Zughaken Brake hose-pipe set + coupling hook | 139832 | 7 |
| 4 | TS - Kinematikp., Druckluftk., Set of kinematics + compressed air parts | 141520 | 12 |
| 5 | Seitenfenster Li + Re Motorwagen/Steuerwagen Sidewindows L + R | 143798 | 9 |
| 6 | TS - Stirnfenster+Lichtleiter Set of front windows + light conductor | 143799 | 10 |
| 7 | TS - Inneneinrichtung Set of interior fittings | 143801 | 9 |
| 8 | TS - Blenden links + rechts Set of cover plug-in parts left + right | 108864 | 12 |
| 9 | Getriebeaufhängung+Schleiferh. Gear support + power pick-up support | 141518 | 5 |
| 10 | TS - Dachteile Set of roof parts | 141539 | 6 |
| 11 | Zugzielbeleuchtung Train destination illumination | 141525 | 7 |
| 12 | TS - Papierzuschnitt Part set paper cut | 108842 | 4 |
| 13 | Fahrerkabinendach Driver's cab roof | 143800 | 5 |
| 14 | Zurüstbeutel - Steuerwagen Accessory bag - control cab car | 141527 | 17 |
| 15 | Bodenplatte Steuerwagen Floor plate | 143803 | 14 |
| 16 | Kupplungsplatine SW 8pol. Coupling PCB SW 8pol. | 141529 | 20 |
| 17 | TS - Unterteil Chassis set | 108853 | 10 |
| 18 | Platine unten Steuerwagen Lower PCB | 141531 | 21 |
| 19 | 1. Klasseabteil Steuerwagen 1st class compartment | 141533 | 6 |
| 20 | Dach kpl. Steuerwagen Roof complete | 143805 | 16 |
| 21 | TS - Radkontakte Part set of contacts | 141535 | 12 |
| 22 | Scheibenwischer L+R Windscreen wiper L+R | 142993 | 6 |
| 23 | Radsatz 9mm - geteilte Achse Wheelset 9mm | 90975 | 9 |
| AC - Wechselstrom | | | |
| 24 | Radsatz 9mm AC Wheelset 9mm AC | 85603 | 6 |
| 25 | Radsatz mit Schlauch - VT628 Wheelset w. hose - VT628 | 108846 | 9 |
| 26 | Schleifer 46mm o. Halteklammer Power pick-up 46mm w/o retaining clip | 86031 | 14 |

Ersatzteile erhalten Sie direkt unter www.roco.cc, bei Ihrem Fachhändler oder Ihrer Landesvertretung:
Spare parts can be ordered directly at www.roco.cc and from your local dealer or country representative.